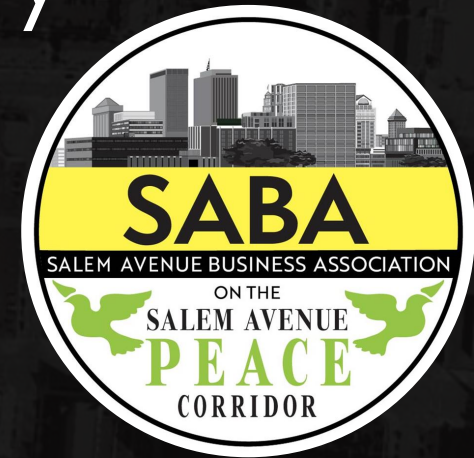


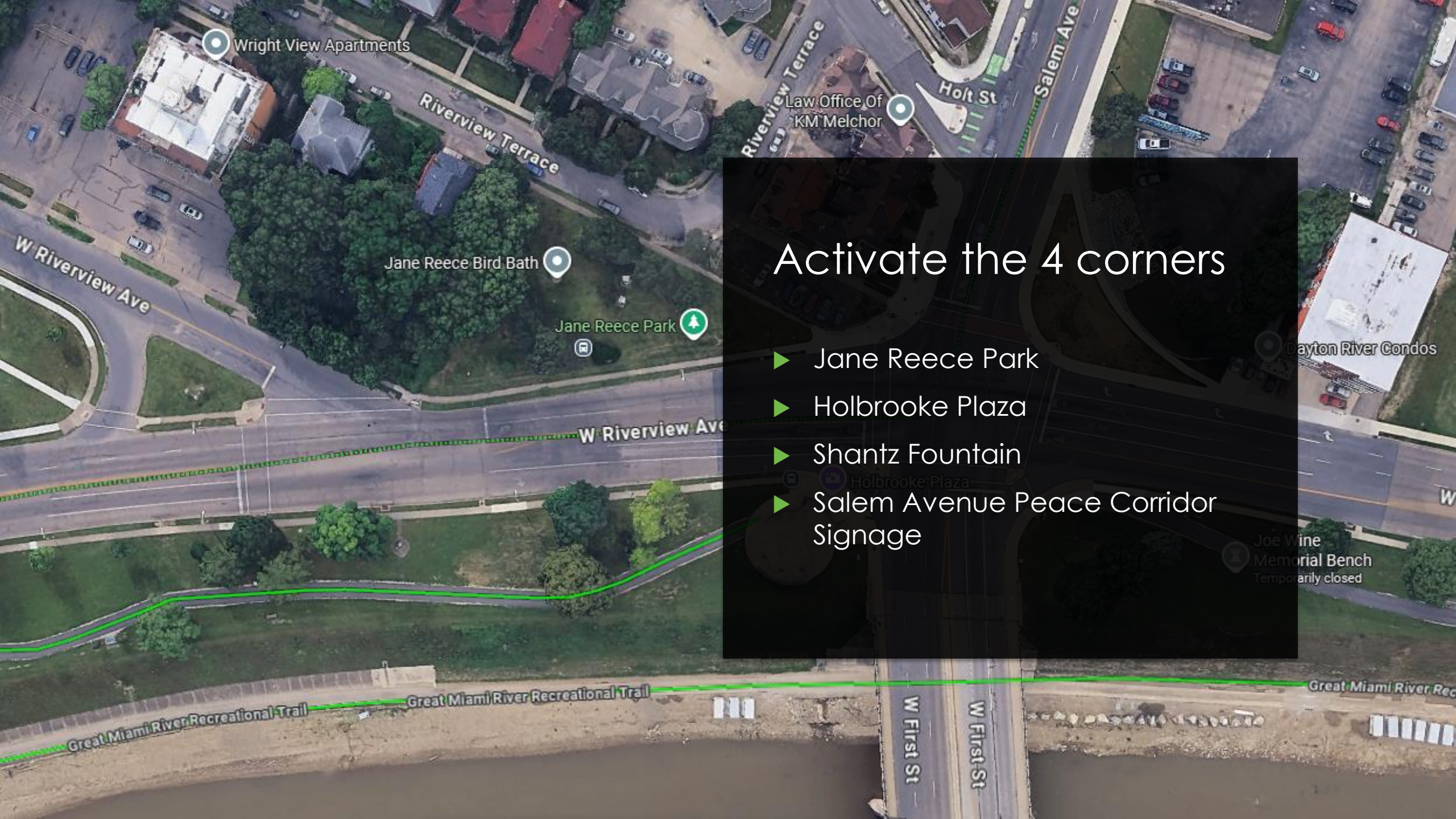
Salem Avenue Gateway Vision

BUILDING A BETTER
GATEWAY INTO
NORTHWEST DAYTON



Building on the themes of
"A Robust Gallery of Place-Specific Art"
from daytonriverfrontplan.org





Activate the 4 corners

- ▶ Jane Reece Park
- ▶ Holbrooke Plaza
- ▶ Shantz Fountain
- ▶ Salem Avenue Peace Corridor Signage



Jane Reece Park - Existing



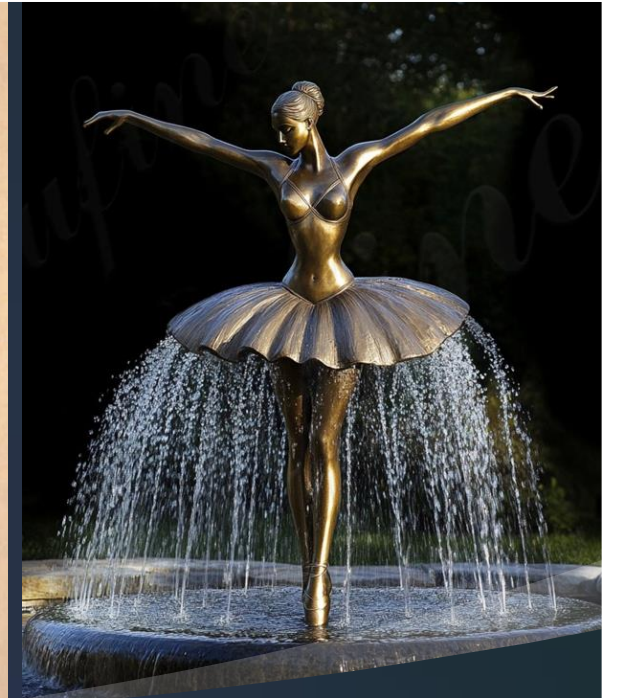
Jane Reece Park - History

- ▶ Columns from Gem City Savings & Loan Association (across from the Old Courthouse)
- ▶ Fountain from the Garden Club of Dayton
- ▶ Jane Reece House hosted early Dayton Ballet performances



Jane Reece Park - Opportunities

- ▶ City is changing the traffic pattern at Riverview (Sign Relocation)
- ▶ Large amount of space to work with
- ▶ Existing Water Connection
- ▶ Adjacent to active uses in McIntosh Park
- ▶ Passive Uses – Forget-Me-Not Garden & Gazebo
- ▶ Celebrate Dayton's LGBTQ History



Jane Reece Park - Vision

- ▶ Sculptures in a Riverscape-style trough celebrate Ballet
- ▶ Jane Reece photographs reproduced in the silver print style in large 4ft x 8ft format on stainless steel throughout the park
- ▶ Restore existing Fountain (as a butterfly puddling location) & ensure pillars are level and safe
- ▶ Fence & Rainbow prairie plantings along hillside at Riverview to celebrate LGBTQ history & secure the site more.



Sun-Shade:	Full Sun to Part Shade
Zones:	4 to 7
Soil Condition:	Well Draining, evenly moist to dry soil
Flower:	light purple



2 Hosta, Blue Mouse Ears	Non-native
Height:	8" (12" in flower)
Spacing:	Plant 12" apart
Bloom Time:	Mid-Summer to Late Summer
Sun-Shade:	Mostly Sunny to Mostly Shady
Zones:	3 to 8
Soil Condition:	Normal, Acidic
Flower:	Lavender



3 Forget Me Nots	non-native
Height:	up to 1 ft
Spacing:	up to 1 ft
Bloom Time:	June - August
Sun-Shade:	Full sun to partial shade
Zones:	3 to 8
Soil Condition:	medium to wet soil
Flower:	blue/purple



4 Bleeding Hearts	Native
Height:	24 inches
Spacing:	18-30"
Bloom Time:	spring
Sun-Shade:	shade - part shade
Zones:	3 to 9
Soil Condition:	well drained
Flower:	pink



5 Great Blue Lobelia	Native
Height:	2-3 ft
Spacing:	12-18"
Bloom Time:	July-October
Sun-Shade:	light shade, sun
Zones:	3 to 9
Soil Condition:	moist to wet
Flower:	purple/pink



8 Autumn Fire Sedum	Non-native
Height:	18"
Spacing:	18-24"
Bloom Time:	Late Summer-Early Fall
Sun-Shade:	full sun
Zones:	3 to 11
Soil Condition:	drought tolerant
Flower:	Pink - red



9 Butterfly Weed	Native
Height:	2-3ft
Spacing:	1-2ft
Bloom Time:	May-September
Sun-Shade:	Sun
Zones:	4 to 9
Soil Condition:	dry, drought tolerant
Flower:	Orange - Yellow



10 Gazebo	13 ft pictured
------------------	-----------------------

11 Oakleaf Hydrangea Ruby slipper	US Native (Southern ranges)
Height:	3-4ft
Spacing:	4-5ft
Bloom Time:	Summer
Sun-Shade:	Filtered sun, Partial shade, Partial sun
Zones:	5 to 9
Soil Condition:	Evenly moist soil
Flower:	Pink/red



12 Salvia	Non-Native
Height:	18-24"
Spacing:	18-24"
Bloom Time:	Early to Mid-Summer
Sun-Shade:	Full Sun
Zones:	4 to 9
Soil Condition:	well draining
Flower:	

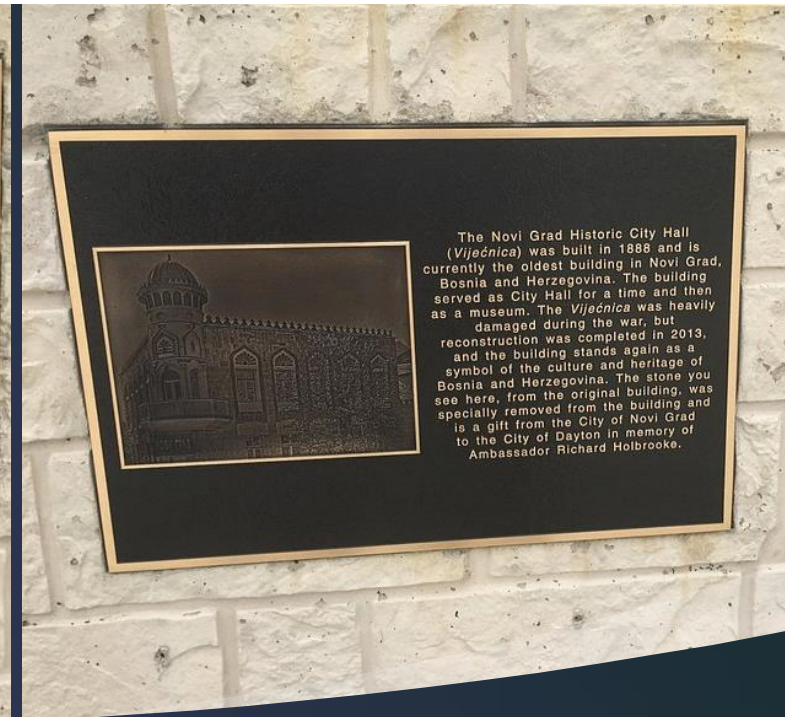
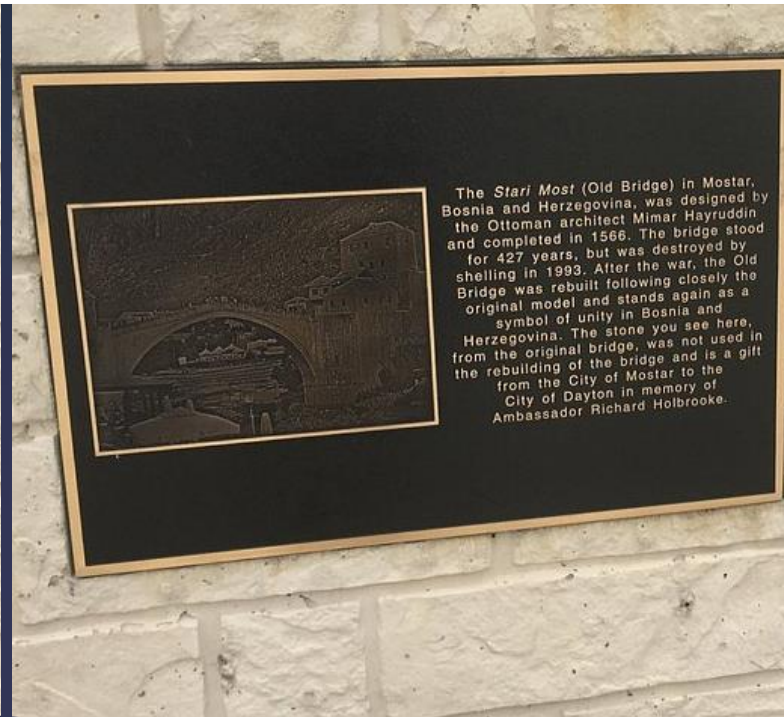


Jane Reece Park – Vision cont.

- ▶ In 2021 Montgomery County Public Health approached the Dayton View Triangle about an infant and maternal loss "Forget-Me-Not Garden".
- ▶ The 45406 zip code has the highest infant and maternal death rates in the county.
- ▶ Although designed, the park never came to fruition over concerns about child safety and car traffic.
- ▶ This space could be a quiet place with calming fountain sounds, and have primary access from Riverview Terrace.



Holbrooke Plaza - Existing



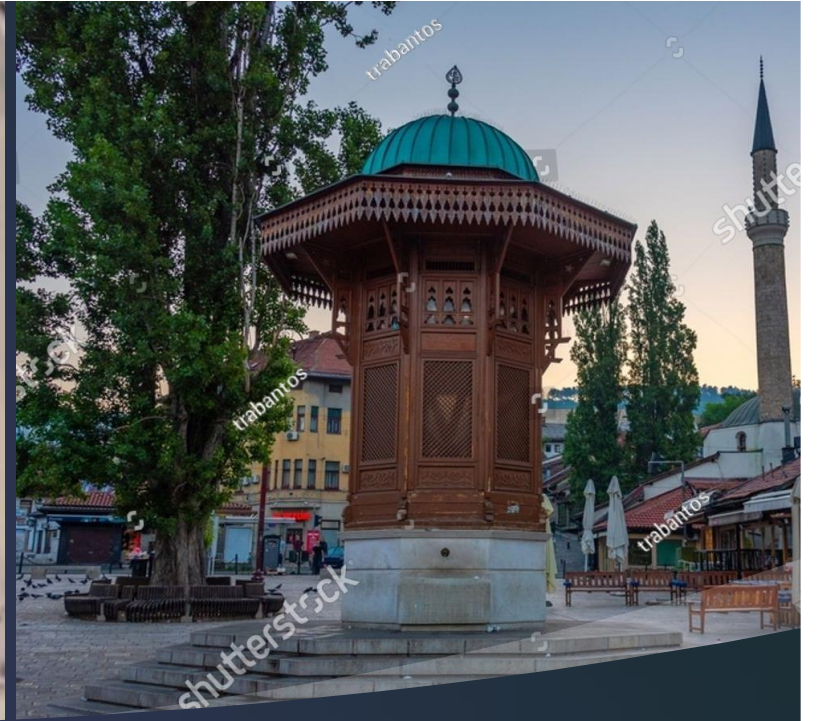
Holbrooke Plaza - History

- ▶ Rubble from various locations in Bosnia and Herzegovina
- ▶ Dedicated to Richard Holbrooke, who led the peace talks that ended the Bosnian War
- ▶ Bike lanes were added in the last couple of years to connect W. Third to Monument



Holbrooke Plaza - Opportunities

- ▶ Better Defined Bike Connections and Amenities to connect to corridor
- ▶ Make the area a true cultural node to learn about Bosnia and Herzegovina and the peace talks in Dayton
- ▶ Existing cultural interest, but doesn't draw pedestrians because many don't know it exists
- ▶ Large Sculpture Location in MetroParks Plan



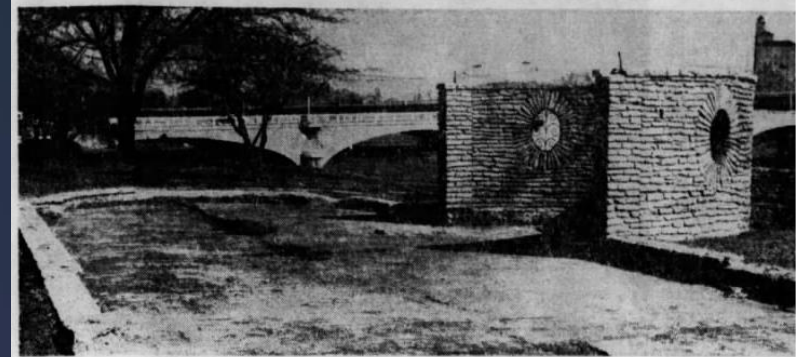
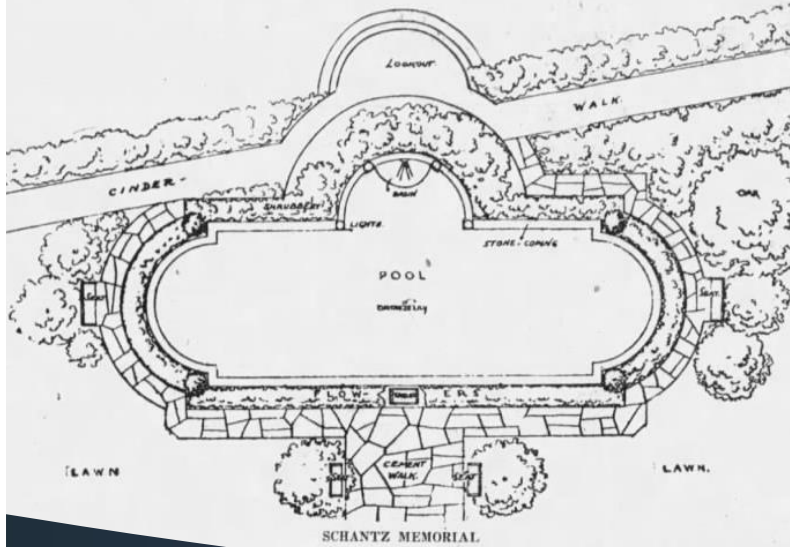
Holbrooke Plaza - Vision

- ▶ Tile or paint the wall facing Salem to bring color into the plaza and invite people to investigate further.
- ▶ Create a map of Bosnia and Herzegovina in mosaic tile showing major landmarks, cities, and locations where the rubble came from.
- ▶ Reimagine the most famous fountain in Sarajevo as a gazebo over the floor map
- ▶ Add seating to the plaza to read the plaques
- ▶ Add bike amenities such as bike racks and a repair stand along the ramp up to Salem.



Adam Schantz Fountain(s) -Existing

ERECT MEMORIAL FOR ADAM SCHANTZ, SR.



Schantz Memorial Park In Dayton's Riverview Park

... Was designed in 1920s, built of rustic

Fixup Funds Have Been Available 4 Years

Fountain Crumbled, Pool Cracked

By Henry Scarupa
Journal Herald Staff Writer

Time, weather and destructive children are moving faster than planners at the Schantz memorial fountain in Dayton's Riverview park.

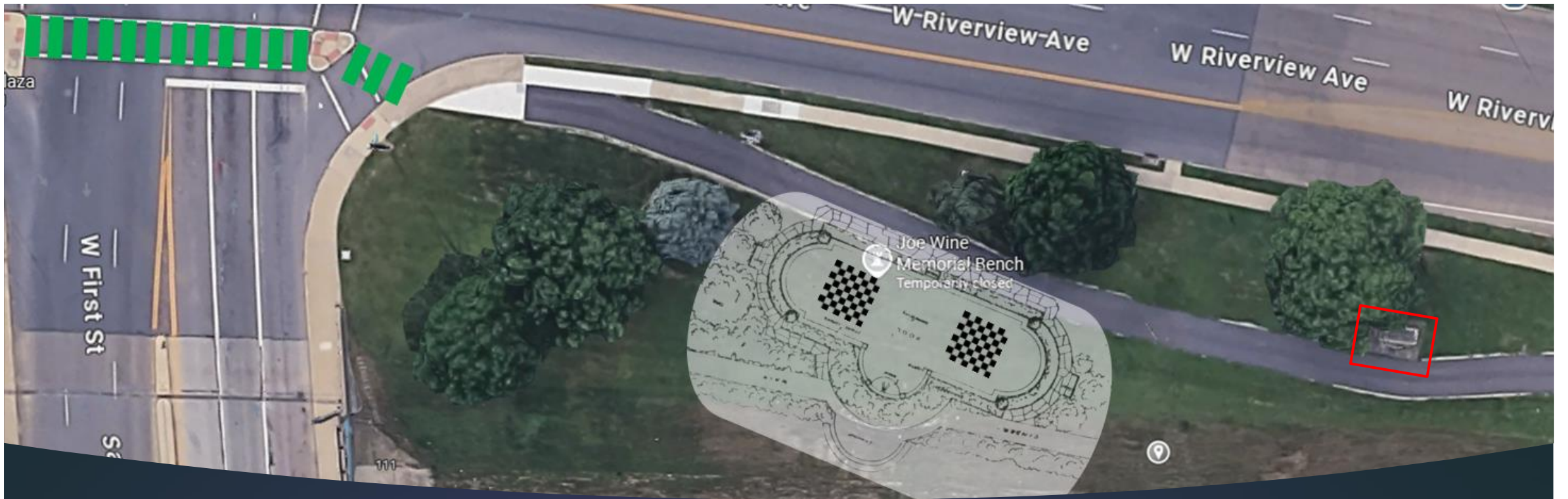
Although funds to restore the area have been available almost four years, lack of agreement on the design has held up the project.

after Dayton's disastrous 1913 flood.

THE MEMORIAL fountain, built of rustic stone, was designed in the 1920s by the late Adam Schantz, Sr., rector of the Dayton Amusement Co.

Schantz Fountain - History

- ▶ Adam Schantz, Sr. made his money bottling beer on this side of the river.
- ▶ After the 1913 flood, he didn't rebuild his breweries that had been on the banks.
- ▶ After Sr.'s death, the estate donated the land for McIntosh Park to the City, with the requirement that the pool be built and specific trees planted and maintained by the city.
- ▶ In the 1960s, Adam Schantz, III donated today's equivalent of \$280,000 to refurbish the pool, but the City couldn't come to an agreement on design, ultimately demolishing it with the heirs' permission



Schantz Fountain - Opportunities

- ▶ Introduce a plaza (not a pool) and reconstruct the stacked stone wall of the original fountain in its original location.
- ▶ Signage can explain the early history of Dayton View and its brewery roots.
- ▶ Refurbish the second "transportation fountain" (also dedicated to Adam Schantz) and make it a functional drinking fountain along the trail.



Schantz Fountain – Vision

- ▶ Create a large sculpture of an Adam Schantz Beer bottle (potentially with a bubbler) and add interpretive signage of Dayton View's brewing history
- ▶ Create an outdoor Chess area (part of MetroPark's Plans)
- ▶ Reconstruct the Semi-Circular portion of the fountain & create the rest of the shape as a plaza.
- ▶ Re-install the Joe Wine Bench.

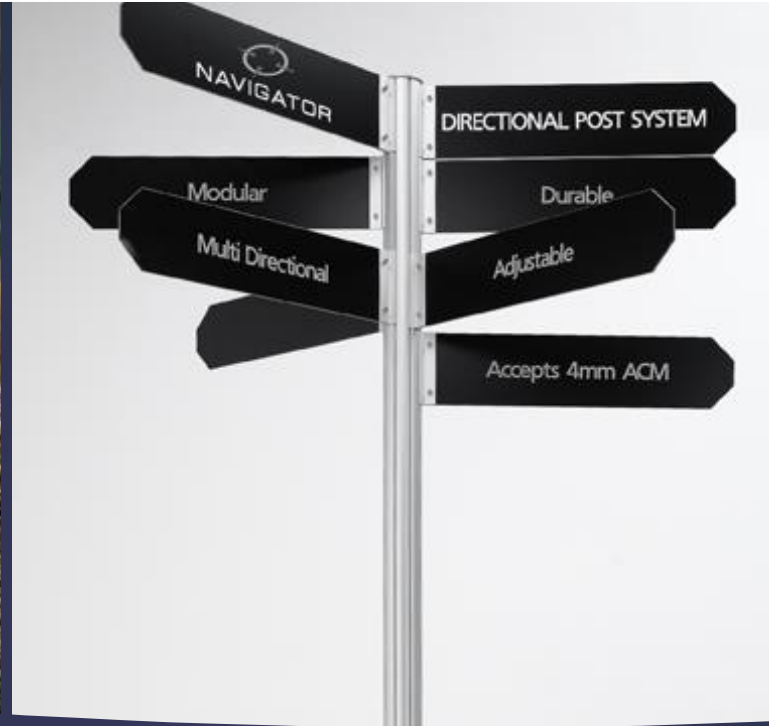


Salem Avenue Peace Corridor Signage - Existing



Salem Avenue Peace Corridor Signage - Opportunities

- ▶ Utilize gained space from slip lane removal to build a pocket prairie
- ▶ Expand upon the 2,000 Cherry Tree Project



Salem Avenue Peace Corridor Signage - Vision

- ▶ Alex Hara's 2,000 Cherry Tree Project to get a trail from Carillon Park to the Dayton Art institute.
- ▶ Introduce some Neighborhood Wayfinding
- ▶ Install a low-lying pocket prairie so the Peace corridor sign remains visible
- ▶ Add some more modern day Northwest Dayton History along the curved sidewalks.



Questions?

- ▶ Contact the Beautification Committee at SABADayton@gmail.com
- ▶ Designer & Presenter, Kegan Sickels, at KeganSickels@gmail.com