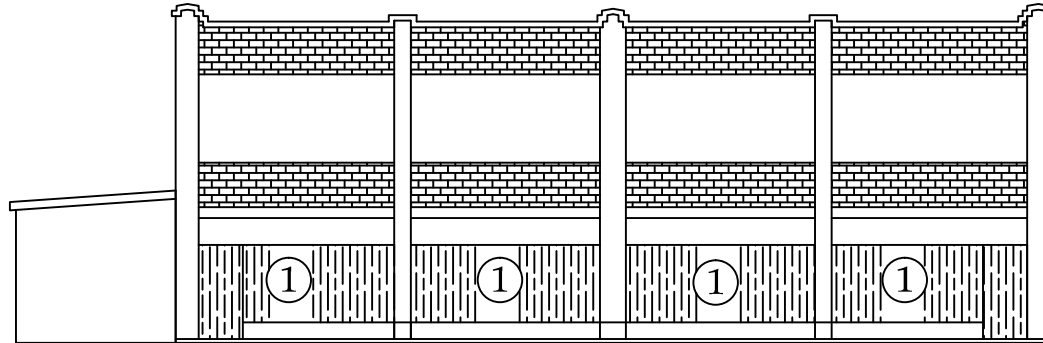
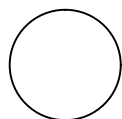
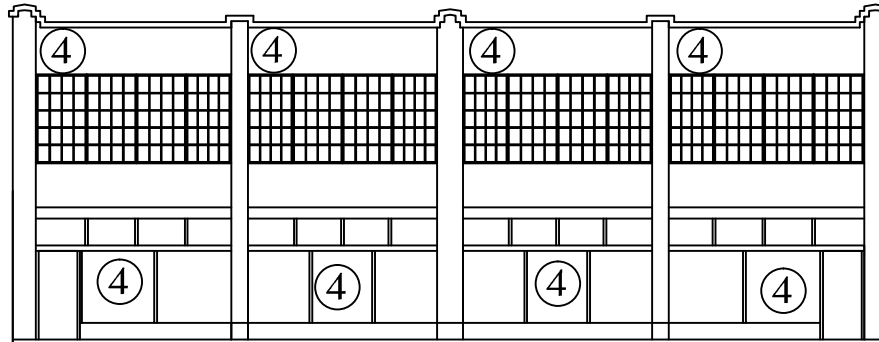




Existing

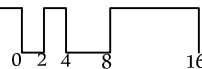


Proposed



ELEVATION South Elevation

SCALE $\frac{1}{16}'' = 1'-0''$



Elevation Coded Notes

- ① Boarded Opening
- ② Open and Unboarded
- ③ Proposed interim filled with stucco finished board
- ④ 1918 Style St. Cloud Industrial Windows
- ⑤ Replace, Repair, Re-point masonry fill and finish

General Notes

Date	Change Description



Building Elevations
Design Development